



ALLVALVES
O N L I N E



Butterfly Valves Pricelist 2017



www.allvalves.co.uk

**Genebre brand of Butterfly valves * Allvalves Italian made
brand of Butterfly valves * High Performance Butterfly
Valves * Butterfly Valve Accessories & EBRO Butterfly
Valve Range**



About Us

All Valves Online Ltd are a valve actuation specialist supplying into a variety of industries using a wide range of products for many applications. Specialising in the assembling and testing of actuated ball and butterfly valve packages, in addition to the supply of a variety of manual valves including knife gate valves, strainers, gates and globes. All Valves has spent the last 5 years building strong relationships with some of the worlds leading brands.



Stafsjö
SINCE 1666

Quality Assurance

ISO 9001-2015 certified company ensuring quality products from a quality supplier. We assemble and test our valve actuation packages ensuring you receive in 100% working condition. We serial number trace all our electric actuators for full traceability. Wherever possible, we work with ISO and TUV accredited manufacturers of valves and actuators.



Industry served



Water Treatment



Pharmaceuticals



Biogas and AD



HVAC & Refrigeration



Brewing and WRAS drinking water



General Industrial Process

Tel: +44(0)1386 552369

www.allvalves.co.uk

sales@allvalves.co.uk

"Leading distributor for another of leading brands including EBRO, J+J and Genebre"



Butterfly Valve Price List 2017

Main Product Categories



Actuated Valve Price List 2017

Industrial valve and actuation Price List 2017, make your selection from the categories below:-



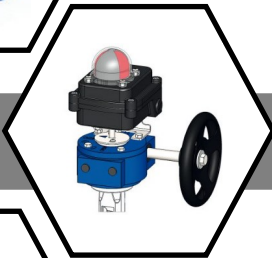
Genebre Butterfly Valves



WRAS EPDM Butterfly Valves



NBR, PTFE and Viton Butterfly Valves



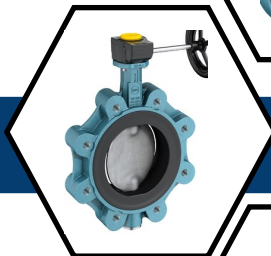
Butterfly Valve Accessories



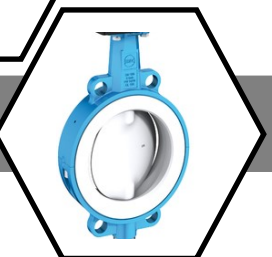
High Performance Butterfly Valves



EBRO Z011A Butterfly Valves



EBRO Z014 Butterfly Valves



EBRO T211, T214 and HP Series

Tel: +44(0)1386 552369

www.allvalves.co.uk

sales@allvalves.co.uk

"One stop show for all of your valve and actuated valve needs"



Industrial Butterfly Valve Price List 2017

Butterfly Valves



Butterfly Valves Price List 2017

Series 2101 - WAFER TYPE BUTTERFLY VALVE. MOUNTING BETWEEN FLANGES PN 10/16 ANSI 150 LBS. BODY: DUCTIL IRON GGG-40. STAINLESS STEEL 316. SEAT: PTFE WITH EPDM BACKUP RING. TEMP. + 180 °C.

Size	2"	2 1/2"	3"	4"	5"	6"	8"	
Price	£268.64	£293.15	£404.75	£541.88	£656.81	£811.28	£1452.55	
Delivery	7-10 Days Typically							



Series 2104 - WAFER TYPE BUTTERFLY VALVE MOUNTING BETWEEN FLANGES PN 10/16 - ANSI 150 LBS. BODY, STEM AND DISC: STAINLESS STEEL 316 (CF8M). SEAT: PTFE WITH EPDM BACKUP RING. TEMP. -25°C + 180°C

Size	2"	2 1/2"	3"	4"	5"	6"	8"	10"	
Price	£423.63	£512.32	£623.31	£800.59	£980.24	£1250.84	£2191.15	£3341.70	
Delivery	7-10 Days Typically								

Series 5104 - WAFER TYPE BUTTERFLY VALVE MOUNTING BETWEEN FLANGES PN 10/16 - ANSI 150LBS. BODY, STEM AND DISC: STAINLESS STEEL 316 (CF8M). SEAT: PTFE WITH EPDM BACKUP RING. TEMP. -25°C + 180°C.

Size	2"	2 1/2"	3"	4"	5"				
Price	£730.77	£922.36	£995.18	£1230.22	£1465.25				
Delivery	7-10 Days Typically								



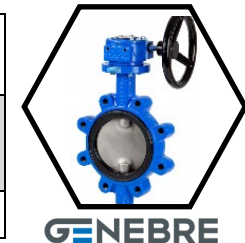
Series 2108 - LUG TYPE BUTTERFLY VALVE. MOUNTING BETWEEN DIN PN10/16 FLANGES. PN 16<-DN 150- PN 10>-DN 200. BODY: DUCTIL IRON GGG40. DISC: CF8M (316). SEAT: EPDM. STEM O'RING NBR. WORKING

Size	2"	2 1/2"	3"	4"	5"	6"	8"	10"	12"
Price	£52.99	£64.17	£71.86	£96.63	£134.51	£160.61	£256.50	£415.77	£646.01
Delivery	7-10 Days Typically								



Series 5108 - As above but with Gearbox operator

Size	2"	2 1/2"	3"	4"	5"	6"	8"	10"	
Price	£201.00	£223.85	£235.15	£273.25	£329.18	£361.12	£549.14	£752.15	
Delivery	7-10 Days Typically								



Series 2108A - LUG TYPE BUTTERFLY VALVE. MOUNTING BETWEEN DIN PN10/16 FLANGES. ANSI150 <-DN 150- PN 10>-DN 200. BODY: DUCTIL IRON GGG40. DISC: CF8M (316). SEAT: EPDM. STEM O'RING NBR.

Size	2"	2 1/2"	3"	4"	5"	6"	8"	10"	12"
Price	£54.00	£65.40	£73.25	£100.47	£139.85	£167.37	£266.67	£425.84	£658.42
Delivery	7-10 Days Typically								

Tel: +44(0)1386 552369

www.allvalves.co.uk

sales@allvalves.co.uk



"Actuated valves built, tested and shipped from our UK works"

Industrial Butterfly Valve Price List 2017

Butterfly Valves



Butterfly Valves Price List 2017

Series 5108A - LUG TYPE BUTTERFLY VALVE. MOUNTING BETWEEN ANSI CLASS 125/150 FLANGES. BODY: DUCTIL IRON GGG-40. DISC: CF8M (316). SEAT: EPDM. STEM O'RING NBR

Size	2"	2 1/2"	3"	4"	5"	6"	8"	10"	12"
Price	£54.00	£65.40	£73.25	£100.47	£139.85	£167.37	£266.67	£425.84	£658.42
Delivery	Typically 7-10 Days								



Series 2103 - WAFER TYPE BUTTERFLY VALVE PN 10/16 ANSI 150 LBS. MANUAL CONTROL BODY: CAST IRON + EPOXY DISK: ZINC PLATED ELASTOMER: EPDM. O'RING STEM: NBR

Size	2"	2 1/2"	3"	4"	5"	6"	8"	10"	12"
Price	£38.07	£46.77	£51.71	£58.94	£70.12	£84.08	£123.19	£227.05	£404.15
Delivery	Typically 7-10 Days								

Series 5103 - WAFER TYPE BUTTERFLY VALVE PN-10/16. ANSI 150 LBS MANUAL CONTROL BODY: CAST IRON + EPOXY DISK: ZINC PLATED ELASTOMER: EPDM. O'RINGS STEM: NBR

Size	2"	2 1/2"	3"	4"	5"	6"	8"	10"	12"
Price	Call	Call	Call	Call	Call	Call	Call	Call	Call
Delivery	Typically 7-10 Days								



Series 2109 - WAFER TYPE BUTTERFLY VALVE PN 10/16. ANSI 150 LBS. MANUAL CONTROL. BODY: CAST IRON + EPOXY DISK: STAINLESS STEEL AISI 316. ELASTOMER: EPDM. O'RING STEM: NBR

Size	2"	2 1/2"	3"	4"	5"	6"	8"	10"	12"
Price	£46.55	£55.42	£63.014	£86.81	£104.07	£131.84	£234.14	£334.17	£595.04
Delivery	Typically 7-10 Days								



Series 5109 - WAFER TYPE BUTTERFLY VALVE PN-10/16. ANSI 150 LBS. MANUAL CONTROL. BODY: CAST IRON + EPOXY DISK: STAINLESS STEEL AISI 316. ELASTOMER: EPDM. O'RING STEM: NBR

Size	2"	2 1/2"	3"	4"	5"	6"	8"	10"
Price	£176.21	£196.39	£207.93	£240.08	£269.97	£296.21	£470.24	£578.05
Delivery	Typically 7-10 Days							



Series 29208 - ISO 5211 for Direct Mount, Wafer to suit PN6/10/16 & ANSI 150, Table D or E, Stainless Steel Body & Disc, PTFE Liner, Lever Operated. Note: Gearbox Operation Also Available Rated PN16, Temp -20°C to 130°C.

Size	2"	2 1/2"	3"	4"	5"	6"	8"
Price	£278.49	£344.31	£444.26	£517.01	£633.32	£799.31	£1197.98
Delivery	Typically Next Day Delivery						

Tel: +44(0)1386 552369

www.allvalves.co.uk

sales@allvalves.co.uk



"We offer a wide range of manual and actuated valves"

Industrial Butterfly Valve Price List 2017

Butterfly Valves



Butterfly Valves Price List 2017

Series 20208 - ISO 5211 for Direct Mount, Epoxy Coated Ductile Iron Body, 316 Stainless Steel Disc, EPDM Liner, Locking Lever Operation 1" to 12", Gearbox Operation 14" to 24",

Size	2"	2 1/2"	3"	4"	5"	6"	8"	10"	12"
Price	£74.39	£84.24	£98.28	£121.50	£184.50	£229.50	£374.40	£669.60	£1013.49
Delivery	Next Day Delivery								



Series 24608 - ISO 5211 for Direct Mount, Epoxy Coated Ductile Iron Body, 316 Stainless Steel Disc, EPDM Liner, Locking Lever Operation 1" to 12", Gearbox Operation 14" to 24",

Size	2"	2 1/2"	3"	4"	5"	6"	8"	10"	12"
Price	£86.40	£98.28	£119.21	£147.58	£204.37	£244.08	£477.36	£806.76	£1297.62
Delivery	Next Day Delivery								

Series 20408 - ISO 5211 for Direct Mount, Epoxy Coated Ductile Iron Body, 316 Stainless Steel Disc, NBR (Buna) Liner, Locking Lever Operation 1 1/2" to 12", Gearbox Operation 14" to 24", with 97/23/CE (PED) Directive CE 1115

Size	2"	2 1/2"	3"	4"	5"	6"	8"	10"	12"
Price	£78.10	£88.45	£103.19	£127.57	£193.73	£240.98	£393.12	£703.67	£1064.16
Delivery	Next Day Delivery								



Series 24808 - ISO 5211 for Direct Mount, Epoxy Coated Ductile Iron Body, 316 Stainless Steel Disc, NBR (Buna) Liner, Locking Lever Operation 1 1/2" to 12"

Size	2"	2 1/2"	3"	4"	5"	6"	8"	10"	12"
Price	£90.72	£103.19	£125.23	£154.94	£214.58	£256.28	£501.23	£847.10	£1362.51
Delivery	Next Day Delivery								

Series 23408 - ISO 5211 for Direct Mount, Epoxy Coated Ductile Iron Body, Aluminium Bronze Disc, NBR (Buna) Liner, Locking Lever Operation 1 1/2" to 12"

Size	2"	2 1/2"	3"	4"	5"	6"	8"	10"	12"
Price	£79.94	£102.38	£10.62	£162.68	£134.20	£286.09	£504.88	POA	POA
Delivery	Next Day Delivery								



Series 23508 - ISO 5211 for Direct Mount, Epoxy Coated Ductile Iron Body, Aluminium Bronze Disc, NBR (Buna) Liner, Locking Lever Operation 1 1/2" to 12"

Size	2"	2 1/2"	3"	4"	5"	6"	8"	10"	12"
Price	£96.77	£120.62	£152.87	£199.15	£277.69	£333.77	£589.01	POA	POA
Delivery	Next Day Delivery								

Tel: +44(0)1386 552369

www.allvalves.co.uk

sales@allvalves.co.uk



"We ship EBRO and Genebre butterfly valves all over the world#"

Industrial Butterfly Valve Price List 2017

Butterfly Valves



Butterfly Valves Price List 2017

Series 20708 - ISO 5211 for Direct Mount, Epoxy Coated Ductile Iron Body, Stainless Steel Disc, PTFE Liner, Locking Lever Operation 1½" to 12"

Size	2"	2½"	3"	4"	5"	6"	8"	10"	12"
Price	£114.06	£137.44	£158.00	£194.47	£248.70	£295.45	£476.83	£1147.24	£1037.80
Delivery	Next Day Delivery								



Series 25108 - ISO 5211 for Direct Mount, Epoxy Coated Ductile Iron Body, Stainless Steel Disc, PTFE Liner, Locking Lever Operation 1½" to 12"

Size	2"	2½"	3"	4"	5"	6"	8"	10"	12"
Price	£125.28	£149.59	£179.51	£218.78	£277.68	£327.24	£532.92	£799.39	£1234.14
Delivery	Next Day Delivery								

Series 20908 - ISO 5211 for Direct Mount, Epoxy Coated Ductile Iron Body, Stainless Steel Disc, FKM (Viton) Liner, Locking Lever Operation 1½" to 12"

Size	2"	2½"	3"	4"	5"	6"	8"	10"	12"
Price	£132.77	£156.13	£176.71	£222.52	£304.80	£356.22	£542.28	£818.09	£1204.22
Delivery	Next Day Delivery								



Series 25308 - ISO 5211 for Direct Mount, Epoxy Coated Ductile Iron Body, Stainless Steel Disc, FKM (Viton) Liner, Locking Lever Operation 1½" to 12"

Size	2"	2½"	3"	4"	5"	6"	8"	10"	12"
Price	£143.99	£168.29	£198.22	£246.83	£333.78	£388.01	£598.37	£902.25	£1424.12
Delivery	Next Day Delivery								

Series 23808 - ISO 5211 for Direct Mount, Epoxy Coated Ductile Iron Body, 316 Stainless Steel Disc, Silicone Free EPDM Liner, Locking Lever Operation, Complies with 97/23/CE (PED) Directive CE 1115 Rated PN16

Size	1½"	2"	2½"	3"	4"	5"	6"	8"	
Price	£73.04	£73.04	£93.10	£107.75	£136.73	£206.17	£247.28	£397.87	
Delivery	Next Day Delivery								



Series 296 - Gearbox for Butterfly Valves – to suit above valve type

Size	1½-6"	8"	10-12"	14"	16"	18"	20"	24"	
Price	£62.40	£129.60	£182.40	£344.35	£386.09	£667.82	£1147.82	£1669.56	
Delivery	Next Day Delivery								

Tel: +44(0)1386 552369

www.allvalves.co.uk

sales@allvalves.co.uk



"We offer EBRO and GIBSON high performance butterfly valves"

Industrial Butterfly Valve Price List 2017

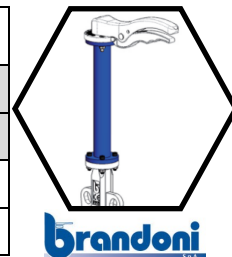
Butterfly Valves



Butterfly Valves Price List 2017

Series 297 - stem Extensions for our Butterfly Valves – to suit our Butterfly valves. Call for bigger 800mm sizes.

	250mm	250mm	250mm	250mm	500mm	500mm	500mm	500mm	800mm
Size	2-4"	5-6"	8"	10-16"	2-4"	5-6"	8"	10-16"	2-4"
Price	£292.18	£336.00	£379.82	£438.26	£321.40	£365.22	£409.04	£511.31	£365.22
Delivery	Next Day Delivery								



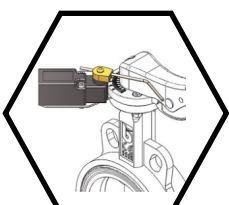
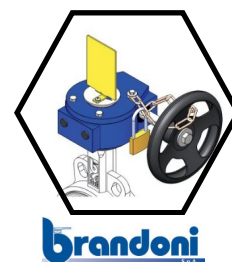
Series 296 - Limit Switchbox for Butterfly Valves – to suit our Butterfly Valves

Size	All
Price	£147.91
Delivery	Next Day Delivery



Series 291 - Position Indicator with Padlock for Butterfly Valves – to suit our Butterfly Valves

Size	All
Price	£62.40
Delivery	Next Day Delivery



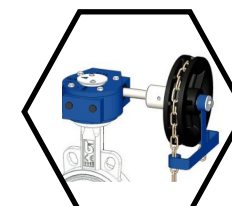
Series 299 - Limit Switches & Bracket for Butterfly Valves – to suit our Butterfly Valves

Size	All
Price	£171.60
Delivery	Next Day Delivery



Series 290 - Chain wheel kit with 4 metre chain to suit our Butterfly Valves

Size	2" to 6"	8" to 16"
Price	£336.00	£384.00
Delivery	Next Day Delivery	



Series 27808 - Wafer to suit PN10/16/25 & ANSI 150 Flanges 2" to 10", PN10/16 & ANSI 150 Flanges 12", Double Offset, Carbon Steel Body, Stainless Steel Disc & Shaft, RPTFE Seat, Lever Operated 2" to 5"

Size	2"	2 1/2"	3"	4"	5"	6"	8"	10"	12"
Price	£542.98	£583.30	£653.18	£860.16	£1107.46	£1435.42	£1618.18	£2201.47	£2682.62
Delivery	Next Day Delivery, call to confirm								



Tel: +44(0)1386 552369

www.allvalves.co.uk

sales@allvalves.co.uk



"Did you know we can offer BRAY butterfly valves?"

Industrial Butterfly Valve Price List 2017

Butterfly Valves



Butterfly Valves Price List 2017

Series 28208 - Lugged PN16/25 2" to 4", PN16 5" to 12", Double Offset, Carbon Steel Body, Stainless Steel Disc & Shaft, Firesafe Seat (Primary Seat RPTFE, Secondary Seat Inconel 625,) Lever Operated 2" to 5",

Size	2"	2 1/2"	3"	4"	5"	6"	8"	10"	12"
Price	£677.38	£760.70	£844.03	£1075.20	£1400.45	£1755.26	£199.81	£2510.59	£3077.76
Delivery	Generally Stock Item, if not factory 3-4 weeks								



Fully Lugged PN16, Ductile Iron Body, Stainless Steel Disc, Vulcanised NBR Liner, Lever Operated, Gas Approved, M9 Specifications T/SP/PRS/38 Full Specification Available on Request.

Size	2"	2 1/2"	3"	4"	6"	8"	10"	12"	14"
Price	POA	POA	POA	POA	POA	POA	POA	POA	POA
Delivery	Factory Lead time 3-5 weeks								

Z 011-A Resilient Seated Valve, A universally applicable wafer type valve manufactured acc. to EN 593. EPDM liner or NBR liner, cast iron body, SS disc. PN10/16/150 flanges lever op.

Size	2"	2 1/2"	3"	4"	5"	6"	8"	10"	12"
Price	£57.60	£66.60	£88.20	£102.60	£142.20	£196.20	£289.80	£514.80	£725.40
Delivery	Next Day Delivery								



Z 011-A GAS For gas applications A resilient seated valve designed for gas applications. Certified by DVGW .

Size	2"	2 1/2"	3"	4"	6"	8"	10"	12"
Price	POA	POA	POA	POA	POA	POA	POA	POA
Delivery	Factory Lead time 3-5 weeks							

Z 011-B Vulcanised Liner A universally applicable butterfly valve with vulcanised liner according to EN 593. Available as wafer- and lug type version.

Size	2"	2 1/2"	3"	4"	6"	8"	10"	12"	14"
Price	POA	POA	POA	POA	POA	POA	POA	POA	POA
Delivery	Factory Lead time 3-5 weeks								



Z 011-A WATER For potable water applications Resilient seated butterfly valve especially designed for water applications. Certified by DVGW

Size	2"	2 1/2"	3"	4"	6"	8"	10"	12"	14"
Price	POA	POA	POA	POA	POA	POA	POA	POA	POA
Delivery	Factory Lead time 3-5 weeks								

Tel: +44(0)1386 552369

www.allvalves.co.uk

sales@allvalves.co.uk

"EBRO is a global brand of quality valves, trusted all over the world"

Industrial Butterfly Valve Price List 2017

Butterfly Valves



Butterfly Valves Price List 2017

Z 014-A Resilient Seated Valves A lugged type butterfly valve. EPDM liner or NBR liner, cast iron body, SS disc. PN10/16/150 flanges lever op.

Size	2"	2 1/2"	3"	4"	5"	6"	8"	10"	12"
Price	£68.40	£79.20	£108.00	£126.00	£178.20	£232.20	£338.40	£622.80	£880.20
Delivery	Generally Stock Item, if not factory 3-4 weeks								



Z 014-A GAS Resilient Seated Valves A lug type butterfly valve for end of line applications

Size	2"	2 1/2"	3"	4"	6"	8"	10"	12"	14"
Price	POA	POA	POA	POA	POA	POA	POA	POA	POA
Delivery	Factory Lead time 3-5 weeks								



Z 014-A WATER Resilient Seated Valves A lug type butterfly valve for end of line applications.

Size	2"	2 1/2"	3"	4"	6"	8"	10"	12"	14"
Price	POA	POA	POA	POA	POA	POA	POA	POA	POA
Delivery	Factory Lead time 3-5 weeks								



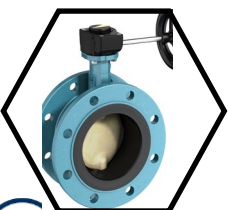
Z 011-AS Light weighted aluminium version A light weighted wafer type valve to be used in public swimming pools.

Size	2"	2 1/2"	3"	4"	6"	8"	10"	12"
Price	POA	POA	POA	POA	POA	POA	POA	POA
Delivery	Factory Lead time 3-5 weeks							



Z 011-GMX Special Lining for abrasive media The special liner of this wafer type valve is suitable for applications with abrasive media

Size	2"	2 1/2"	3"	4"	6"	8"	10"	12"	14"
Price	POA	POA	POA	POA	POA	POA	POA	POA	POA
Delivery	Generally Stock Item, if not factory 3-4 weeks								



F 012-A Resilient Seated Valves A double flanged valve with vulcanised liner suited for heavy duty services such as shipbuilding and wastewater plants.

Size	2"	2 1/2"	3"	4"	6"	8"	10"	12"	14"
Price	POA	POA	POA	POA	POA	POA	POA	POA	POA
Delivery	Factory Lead time 3-5 weeks								



Tel: +44(0)1386 552369

www.allvalves.co.uk

sales@allvalves.co.uk

"We specify EBRO wherever possible, quality valves"



Industrial Butterfly Valve Price List 2017

Butterfly Valves



Butterfly Valves Price List 2017

F 012-A GAS Resilient Seated Valves A double flanged valve suited for heavy duty services such as ship-building and wastewater plants.

Size	2"	2 1/2"	3"	4"	6"	8"	10"	12"	14"
Price	POA	POA	POA	POA	POA	POA	POA	POA	POA
Delivery	Generally Stock Item, if not factory 3-4 weeks								



F 012-K1 Resilient Seated Valves A double flanged valve in short construction designed for heavy duty services.

Size	2"	2 1/2"	3"	4"	6"	8"	10"	12"	14"
Price	POA	POA	POA	POA	POA	POA	POA	POA	POA
Delivery	Factory Lead time 3-5 weeks								

F 012-K1 GAS resilient Seated Valves A double flanged valve in short construction designed for heavy duty services

Size	2"	2 1/2"	3"	4"	6"	8"	10"	12"	14"
Price	POA	POA	POA	POA	POA	POA	POA	POA	POA
Delivery	Factory Lead time 3-5 weeks								



Z 411-A Resilient Seated Valves The reduced inner diameter of this wafer type valve is suited to be installed in PE/PP piping systems

Size	2"	2 1/2"	3"	4"	6"	8"	10"	12"
Price	POA	POA	POA	POA	POA	POA	POA	POA
Delivery	Factory Lead time 3-5 weeks							

Z 411-A GAS Resilient Seated Valves The reduced inner diameter of this wafer type valve is suited to be installed in PE/PP piping systems.

Size	2"	2 1/2"	3"	4"	6"	8"	10"	12"	14"
Price	POA	POA	POA	POA	POA	POA	POA	POA	POA
Delivery	Factory Lead time 3-5 weeks								



Z 414-A Resilient Seated Valves The reduced inner diameter of this lug type valve is suited to be installed in PE/PP piping systems.

Size	2"	2 1/2"	3"	4"	6"	8"	10"	12"	14"
Price	POA	POA	POA	POA	POA	POA	POA	POA	POA
Delivery	Factory Lead time 3-5 weeks								

Tel: +44(0)1386 552369

www.allvalves.co.uk

sales@allvalves.co.uk

"T211 and T214 are high quality PTFE lined valves"

Industrial Butterfly Valve Price List 2017

Butterfly Valves



Butterfly Valves Price List 2017

Z 414-A GAS Resilient Seated Valves The reduced inner diameter of this lug type valve is suited to be installed in PE/PP piping systems.



Size	2"	2 1/2"	3"	4"	6"	8"	10"	12"	14"
Price	POA	POA	POA	POA	POA	POA	POA	POA	POA
Delivery	Factory Lead time 3-5 weeks								



Z 611-K Resilient Seated Valves Valve with split stainless steel body for use in the food and beverage industry. Soft seated and PTFE lined versions are available.

Size	2"	2 1/2"	3"	4"	6"	8"	10"	12"	14"
Price	POA	POA	POA	POA	POA	POA	POA	POA	POA
Delivery	Factory Lead time 3-5 weeks								

Z 614-K Valve with split body Valve with split stainless steel body for use in the food and beverage industry. Soft seated and PTFE lined versions are available.



Size	2"	2 1/2"	3"	4"	6"	8"	10"	12"	14"
Price	POA	POA	POA	POA	POA	POA	POA	POA	POA
Delivery	Factory Lead time 3-5 weeks								



Z 011-A THERM Wafer Type valve with integrated thermometer A unique valve series with integrated thermometer for media temperature control.

Size	2"	2 1/2"	3"	4"	6"	8"	10"	12"
Price	POA	POA	POA	POA	POA	POA	POA	POA
Delivery	Factory Lead time 3-5 weeks							

INFLAS Low wear through inflatable liner The sealing system was developed for use with highly abrasive or very sensitive media, for all resilient seated butterfly valves with replaceable liner.



Size	2"	2 1/2"	3"	4"	6"	8"	10"	12"	14"
Price	POA	POA	POA	POA	POA	POA	POA	POA	POA
Delivery	Factory Lead time 3-5 weeks								



T 211-A PTFE Valve PTFE-lined wafer type valve for chemicals and high-corrosive media

Size	2"	2 1/2"	3"	4"	6"	8"	10"	12"	14"
Price	POA	POA	POA	POA	POA	POA	POA	POA	POA
Delivery	Generally Stock Item, if not factory 3-4 weeks								

Tel: +44(0)1386 552369

www.allvalves.co.uk

sales@allvalves.co.uk

"Low consistent torques make EBRO valves ideal to actuate"

Industrial Butterfly Valve Price List 2017

Butterfly Valves



Butterfly Valves Price List 2017

T 212-A PTFE Valve Double flanged PTFE-lined butterfly valve for Shut-off and Control Services in the chemical industry.

Size	2"	2 1/2"	3"	4"	6"	8"	10"	12"	14"
Price	POA	POA	POA	POA	POA	POA	POA	POA	POA
Delivery	Factory Lead time 3-5 weeks								



T 214-A PTFE Valve PTFE-lined lug type valve for chemicals and high-corrosive media

Size	2"	2 1/2"	3"	4"	6"	8"	10"	12"	14"
Price	POA	POA	POA	POA	POA	POA	POA	POA	POA
Delivery	Factory Lead time 3-5 weeks								

T 211-C PTFE Valve PTFE-lined wafer type valve for toxic and highly corrosive media. Specially designed for the chemical industries

Size	2"	2 1/2"	3"	4"	6"	8"	10"	12"	14"
Price	POA	POA	POA	POA	POA	POA	POA	POA	POA
Delivery	Factory Lead time 3-5 weeks								



T 214-C PTFE Valve PTFE-lined lug type valve for toxic and highly corrosive media. Specially designed for the chemical industries.

Size	2"	2 1/2"	3"	4"	6"	8"	10"	12"
Price	POA	POA	POA	POA	POA	POA	POA	POA
Delivery	Factory Lead time 3-5 weeks							

HP 111 High Performance Valves A high-performance wafer type valve suitable for high pressure and high temperature applications.

Size	2"	2 1/2"	3"	4"	6"	8"	10"	12"	14"
Price	POA	POA	POA	POA	POA	POA	POA	POA	POA
Delivery	Factory Lead time 3-5 weeks								



HP 114 High Performance Valves A high-performance lug type valve suitable for high pressure and high temperature applications

Size	2"	2 1/2"	3"	4"	6"	8"	10"	12"	14"
Price	POA	POA	POA	POA	POA	POA	POA	POA	POA
Delivery	Factory Lead time 3-5 weeks								

Tel: +44(0)1386 552369

www.allvalves.co.uk

sales@allvalves.co.uk

"Actuated valves built, tested and shipped from our UK works"

Industrial Butterfly Valve Price List 2017

Butterfly Valves



Butterfly Valves Price List 2017

HP 112 High Performance Valves Double-flanged butterfly valve in double-eccentric construction. Reliable sealing even with extreme temperature and pressure conditions.

Size	2"	2 1/2"	3"	4"	6"	8"	10"	12"	14"
Price	POA	POA	POA	POA	POA	POA	POA	POA	POA
Delivery	Factory Lead time 3-5 weeks								



HP 114-K3 High Performance Valves Lug type butterfly valve in double-eccentric construction. Reliable sealing even with extreme temperature and pressure conditions.

Size	2"	2 1/2"	3"	4"	6"	8"	10"	12"	14"
Price	POA	POA	POA	POA	POA	POA	POA	POA	POA
Delivery	Factory Lead time 3-5 weeks								

HP 300 High Performance Valves Lug type butterfly valve in triple-eccentric construction. Reliable sealing even with extreme temperature and pressure conditions up to 63 bar.

Size	2"	2 1/2"	3"	4"	6"	8"	10"	12"	14"
Price	POA	POA	POA	POA	POA	POA	POA	POA	POA
Delivery	Factory Lead time 3-5 weeks								

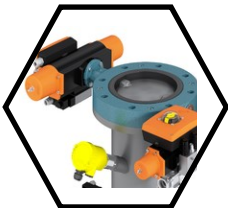
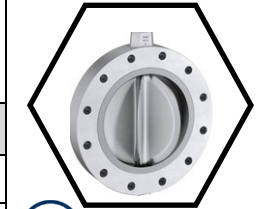


BE 50/BE 80 container valve A valve series especially designed to be used with silos and containers.

Size	2"	2 1/2"	3"	4"	6"	8"	10"	12"
Price	POA	POA	POA	POA	POA	POA	POA	POA
Delivery	Factory Lead time 3-5 weeks							

FS-M impeller valve The impeller valve series FS is designed for a safe and consistent discharge of rapid flowing products in the bulk industry.

Size	2"	2 1/2"	3"	4"	6"	8"	10"	12"	14"
Price	POA	POA	POA	POA	POA	POA	POA	POA	POA
Delivery	Generally Stock Item, if not factory 3-4 weeks								



CYCLE LOCK EBRO cycle-locks are installed where powdered media is discharged from silos, receiver tanks and bigbags and dosed in many cases. They are also used for feeding into downstream production processes, as well as for inertisation of products during transfer operation

Size	2"	2 1/2"	3"	4"	6"	8"	10"	12"	14"
Price	POA	POA	POA	POA	POA	POA	POA	POA	POA
Delivery	Factory Lead time 3-5 weeks								

Tel: +44(0)1386 552369

www.allvalves.co.uk

sales@allvalves.co.uk

"EBRO HP series for High Performance requirements"